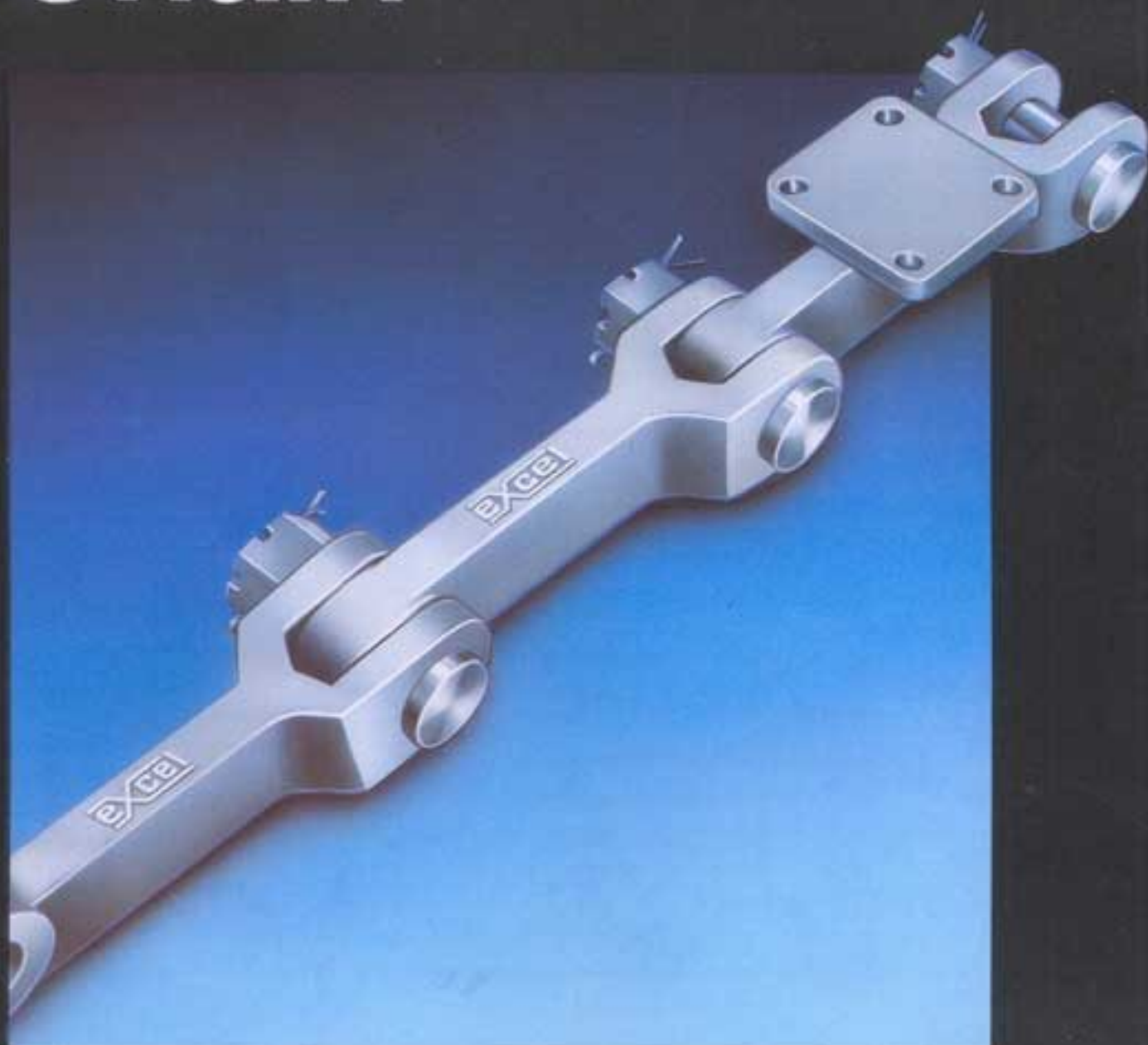


Excel Block Forged Chain



excel
WITH TONNES OF TRUST

Excel Block Forged Chain

SMA has always kept itself step in step with time. Development of new products to solve the problems of OEM customers has become a routine for SMA. Excel Block Forged Chain is an outcome of that.

Developed after years of experience in manufacturing Chains for sugar mills, Excel Block Forged Chain has specific advantages. Its minimum number of moving parts reduces the wear and tear considerably giving an extra long life to the chain.

It is specially engineered keeping the rugged applications of sugar mill plants in to consideration. Its precise closed die forging in carbon steel ensures compact granular structure and imparts extra strength to the chain. The same is machined to give ideal tolerance ensuring minimum friction. In all, that results in to a trouble free performance and extra long life.

The major advantage offered by Block Forged Chain is minimum maintenance and high productivity to sugar mills which leads to high profits.

EACH COMPONENT A HALLMARK OF QUALITY:

Excel Block Forged Chain is made from components which are manufactured and tested with utmost care to give the best product. Some of the special features of the components are as under.

LINK:

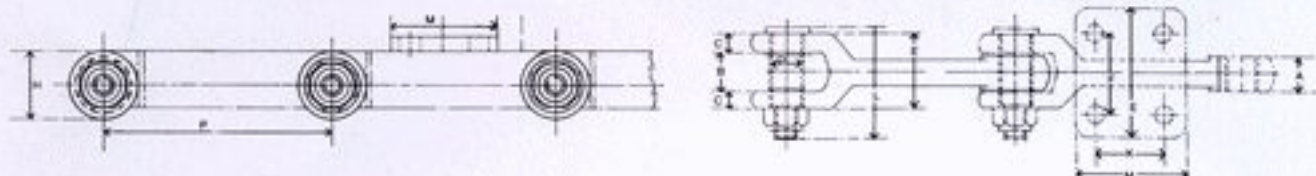
- 1) Made from carbon steel to give inborn strength.
- 2) Closed die forging to achieve compact granular structure.
- 3) Precise machining to achieve ideal tolerance minimizing friction.
- 4) Appropriate heat treatment ensuring required hardness to withstand vigorous friction and wear & tear.

PIN:

- 1) Made from alloy steel.
- 2) Precise machining to achieve ideal tolerance.
- 3) Suitably heat treated to impart extra strength and wear resistant property and toughness to bear impact load.

BUSH:

- 1) Made from alloy steel.
- 2) Precise machining to achieve smooth outer surface and ideal tolerances.
- 3) Suitably heat treated to impart extra strength to withstand vigorous friction and wear & tear.



Dimensions and Strength of EXCEL Block Forged Chain

Chain No.	Average Pitch P mm	Average Weight kg/link		Average Ultimate Strength kg	Dimensions (mm)										
		Plain Link	Attachment Link		A	B	C	D	E	F	H	J	K	L	M
XL-BFC 305	304.8 (12")	14	17	88,000	50.8	54	36.5	44.5	127	82.6	100	63.5	108	158	152.4
XL-BFC 229	229 (9")	5.25	6.75	60,000	35	36	17.5	35	71	70 (Min)	70	57	50 (Min)	115	140

STANDARD MATERIALS AGENCIES PVT. LTD.

■ HEAD OFFICE:
45/46, Podar Chambers,
S.A. Brelvi Road, Bombay-400 023.

Phone : 022 - 2266 3202 / 3262 • Fax : 022 - 2266 1545
E-mail : smaexcel@bom2.vsnl.net.in, enquiry@smaexcel.com
Website : www.smaexcel.com / www.smaltd.com