



FLEXIBLE COUPLINGS

QUALITY SUPREME



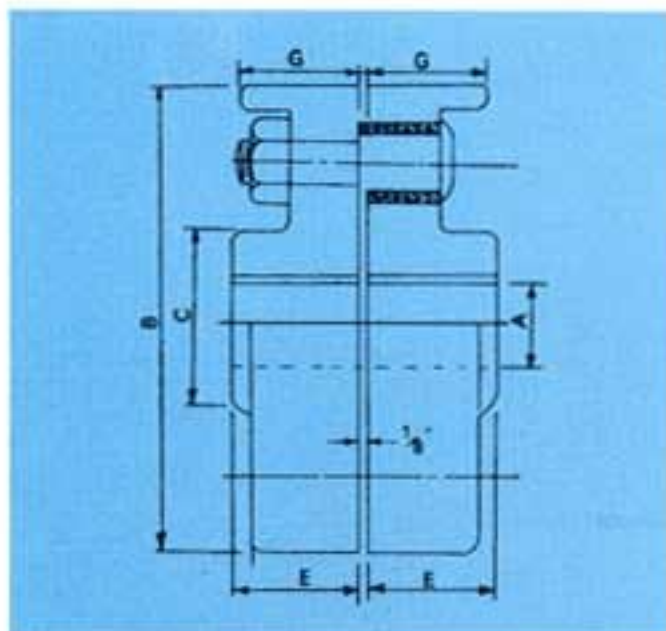


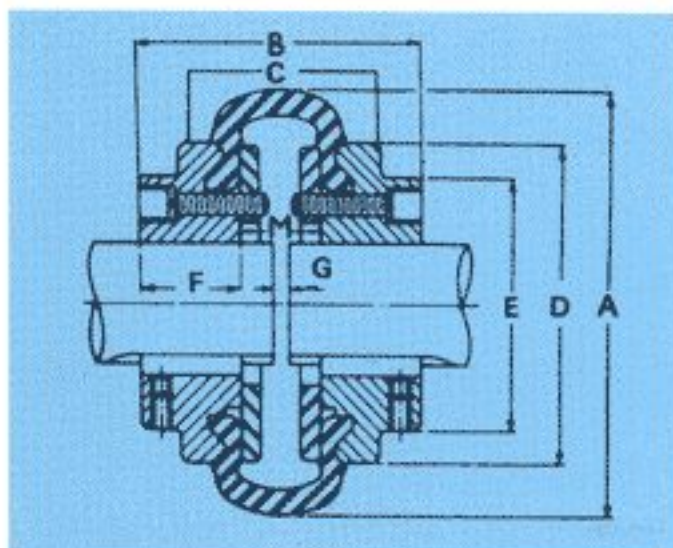
TABLE - A

COUPLING NO.	BORE		OUT-SIDE DIA.	HUB DIA.	HUB LENGTH	FLANGE WIDTH	MAXI-MUM RATING PER 100 REV. - MIN.
	MIN.	MAX.					
	A	B	C	E	G		
XLFC-1	12	16	80	28	28	18	KW 0.4
XLFC-2	16	22	100	35	30	20	0.6
XLFC-3	22	30	112	45	32	22	0.8
XLFC-4	30	45	132	65	40	30	2.5
XLFC-5	45	56	170	80	45	35	4.0
XLFC-6	56	75	200	100	56	40	6.0
XLFC-7	75	85	250	140	63	45	16.0
XLFC-8	85	110	315	180	80	50	25.0
XLFC-9	110	130	400	212	90	56	52.0
XLFC-10	130	150	500	280	100	60	74.0

TABLE - B

ALL DIMENSIONS IN M. M.

COUPLING NO.	BOLT RECESS	PCD OF BOLTS	NO. OF BOLT HOLES	BOLT DIA.	BUSH DIA.	NOMI-NAL GAP BETWEEN COUPLING HALVES
XLFC-1	10	53	3	8	20	2
XLFC-2	12	63	3	10	22	2
XLFC-3	12	73	3	10	22	2
XLFC-4	15	90	4	12	25	4
XLFC-5	15	120	4	12	25	4
XLFC-6	15	150	4	12	30	4
XLFC-7	22	190	6	16	40	5
XLFC-8	22	250	6	16	40	5
XLFC-9	28	315	8	18	45	6
XLFC-10	28	400	8	18	45	6



AVAILABLE READILY IN THE FOLLOWING STANDARD SIZES

Sr. No.	Size	Max. Bore (Inches)	HORSE POWER AT VARIOUS SPEEDS				
			Max. R. P. M.	Per 100 R. P. M.	Per 1440 R. P. M.	Per 960 R. P. M.	Per 585 R. P. M.
1	XLTC-050	1/2	6000	0.035	0.50	0.34	0.20
2	XLTC-05A	5/8	6000	0.035	0.50	0.34	0.20
3	XLTC-075	3/4	5500	0.055	0.79	0.52	0.32
4	XLTC-1	7/8	5500	0.080	1.15	0.77	0.47
5	XLTC-1.5	1	5250	0.11	1.58	1.05	0.64
6	XLTC-2	1.18	5200	0.15	2.16	1.44	0.88
7	XLTC-3	1.14	4600	0.23	3.31	2.20	1.34
8	XLTC-5	1.12	4400	0.40	5.76	3.84	2.34
9	XLTC-10	1.34	4200	0.75	10.80	7.30	4.39
10	XLTC-18	2	3750	1.25	18.00	12.00	7.31
11	XLTC-26	2.14	3200	1.82	26.21	17.47	10.64
12	XLTC-42	2.1/2	2800	3.00	43.20	28.80	17.55
13	XLTC-82	3	2500	5.80	83.50	53.47	33.03
14	XLTC-130	4	2200	9.16	131.90	87.93	53.54
15	XLTC-300	5.1/2	1700	21.00	302.40	201.60	122.85
16	XLTC-650	6.3/4	1300	45.00	655.20	436.80	266.17
17	XLTC-1000	7.1/2	1080	90.00	—	864.00	526.50
18	XLTC-1350	9	960	180.00	—	1824.00	1111.50
19	XLTC-2880	9	960	400.00	—	3840.00	2340.00

APPROX. DIMENSIONS OF STANDARD SIZES IN INCHES

A	B	C	D	E	F	G
2.3/8	2.1/4	1.11/16	1.3/4	1.3/8	3/4	3/4
3.9/16	2.1/2	1.3/4	2.1/4	1.5/32	13/16	7/8
3.9/16	2.3/4	1.3/4	2.1/4	1.7/32	15/16	7/8
3.13/16	2.15/16	1.7/8	2.11/16	1.7/16	1.1/32	7/8
4.3/4	3	2	3.9/16	1.3/4	1.1/16	7/8
4.3/4	3	1.15/16	3.9/16	2	1.1/16	7/8
5.1/4	3.13/16	2	4.1/8	2.1/8	1.5/16	1.3/16
6.1/4	4.5/16	2.3/4	4.7/16	2.1/2	1.9/16	1.3/16
7.1/4	4.7/8	3.3/16	5	2.3/4	1.3/4	1.3/8
8.3/8	5.7/8	3.1/2	5.5/8	3.1/8	2.3/16	1.1/2
8.5/16	6.7/16	3.3/8	6.5/8	3.7/8	2.3/8	1.11/16
9.1/4	6.13/16	4.1/16	7.1/8	4	2.9/16	1.11/16
12.1/8	7.1/4	4.3/4	9	5.1/4	2.13/16	1.5/8
14.1/8	8.7/16	5.1/2	10	6.1/2	3.5/8	1.3/16
16.1/2	10.1/4	5.5/16	13.15/16	9.5/16	4.3/4	3/4
20.7/8	11.1/2	6.5/16	17.7/8	12.3/8	5.1/8	1.1/4
24.3/4	18	7.7/8	21.1/8	15.1/4	8	2
29.3/8	20.1/4	9	25.1/8	18.1/2	9.1/8	2
29.3/8	20.1/4	9	25.1/8	17.1/2	9.1/8	2



ULTRA PERFORMANCE PRODUCT RANGE

- TRANSMISSION ROLLER DRIVE CHAINS :** We keep stocks of all sizes of B.S., A.S., D.I.N. & I.S. Specifications transmission roller drive chains, in single and multiple strands.
- CONVEYOR / CARRIER CHAINS :** Manufactured from M.S. or High Tensile Steels as per Customer Drawings. The rollers, pins and bushes are heat treated, hardened and ground.
- ELEVATOR CHAINS :** Plain or with Attachment links etc., manufactured from Malleable Iron or Fabricated High Tensile Steel.
- SPROCKETS :** All types of sprockets manufactured from C.I., Medium Carbon Steel, M.S. or Cast Steel with cast or machine cut teeth. Available ex-stock or for early delivery.
- GEARS :** All types of Spur Gears upto 12 feet diameter Bevel, Worm, Helical and Spiral Bevel gears. The gears are manufactured from M.S., C.I., Cast Steel, Gun Metal or Phosphor Bronze.
- PULLEYS :** C.I. 'V' Belt or Flat Belt Pulleys, Solid or Split type, tailor made to your requirements. We keep several sizes in stock.
- COUPLINGS :** We manufacture flexible couplings, Flexible Gear Couplings, Standard Tyre Type Flexible couplings and Roller Chain Flexible couplings as per Customer specifications.
- SHAFTS & PEDESTALS :** We manufacture steel shafts and pedestals duly machined as per your drawings / parameters.

We have the solution to your Mechanical Power Transmission Problems.



Contact:

STANDARD MATERIALS AGENCIES PVT. LTD.

Manufacturers & Engineers

45/46, Podar Chambers, S. A. Brelvi Road. Mumbai - 400 023. INDIA.

TEL: 022-2266 3262 / 2266 3202 / 2266 5309. - FAX: 022 - 2266 1545

Email: smaexcel@bom2.vsnl.net.in

www.smaltd.com

www.smaexcel.com

enquiry@smaexcel.com