

excel

excel[®]
EXTRA
LONG
LIFE

CEMENT PLANT CHAINS





Conveyor Chains for Cement

Excel Extra Wear Resistant Cement Plant Chains are Application Engineered to achieve an Extra Long Life in the exceptionally abrasive conditions that prevail in Cement Plants. These ruggedly built and solid strength chains are the result of decades of experience of our design and development engineers.

The Customer's precise requirements for handling of Bulk Materials like Limestone, Coal and Cement are now possible with **Excel** Chains. **Excel** Chains for Cement Mill Machinery are already in use for transporting of Crushed Limestone, Coal, Clinker, Cement, etc., and have been specially designed for Material Handling Equipment as mentioned below :

- 1) Stacker/Bridge Reclaimer
- 2) Scraper Reclaimer
- 3) Clinker Handling
- 4) Deep Bucket Conveyor
- 5) Deep Pan Conveyor

Excel Chains are manufactured from carefully selected raw materials, correctly heat treated components to achieve higher tensile strength and better wear resistance for trouble free performance.

Excel Chains are available as replacement for various equipment of O.E.M. as herebelow:

RECLAIMER STACKER EQUIPMENT

Cimmco-Birla Ltd. • F. L. Smidth • Gustave Schade • Krupp Industries India Ltd. • (MVT) Maschinen Und Verfahrenstechnik, Mukand Dravo Wellman Ltd. • O & K Orenstein And Koppel (India) Ltd. • Polysius • TRF Ltd., etc.,

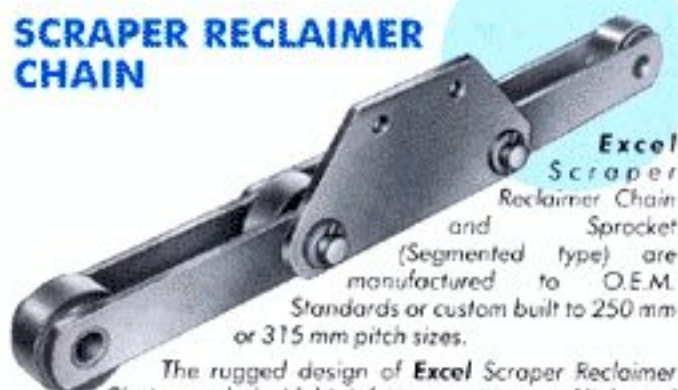
CLINKER HANDLING

Aumund • Cimmco-Birla Ltd • F.L. Smidth • Krupp Industries India Ltd. • Larsen & Toubro Ltd. • Polysius • Walchandnagar Industries Ltd., etc.,

BUCKET ELEVATORS

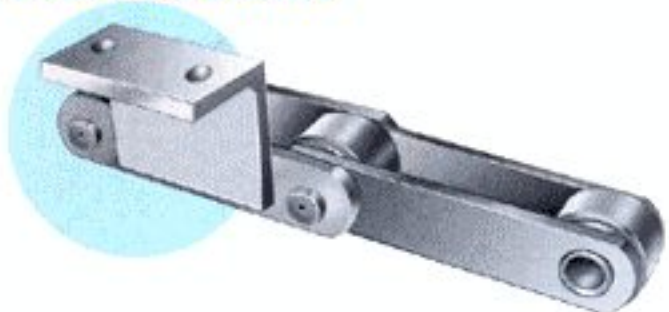
BHP - (Rexnord) • Ennexco Technologies India Ltd. • Ewart • Fuller India Ltd. • Krupp Industries India Ltd. • Mahindra - Tsubaki • Walchandnagar Industries Ltd., etc.,

SCRAPER RECLAIMER CHAIN

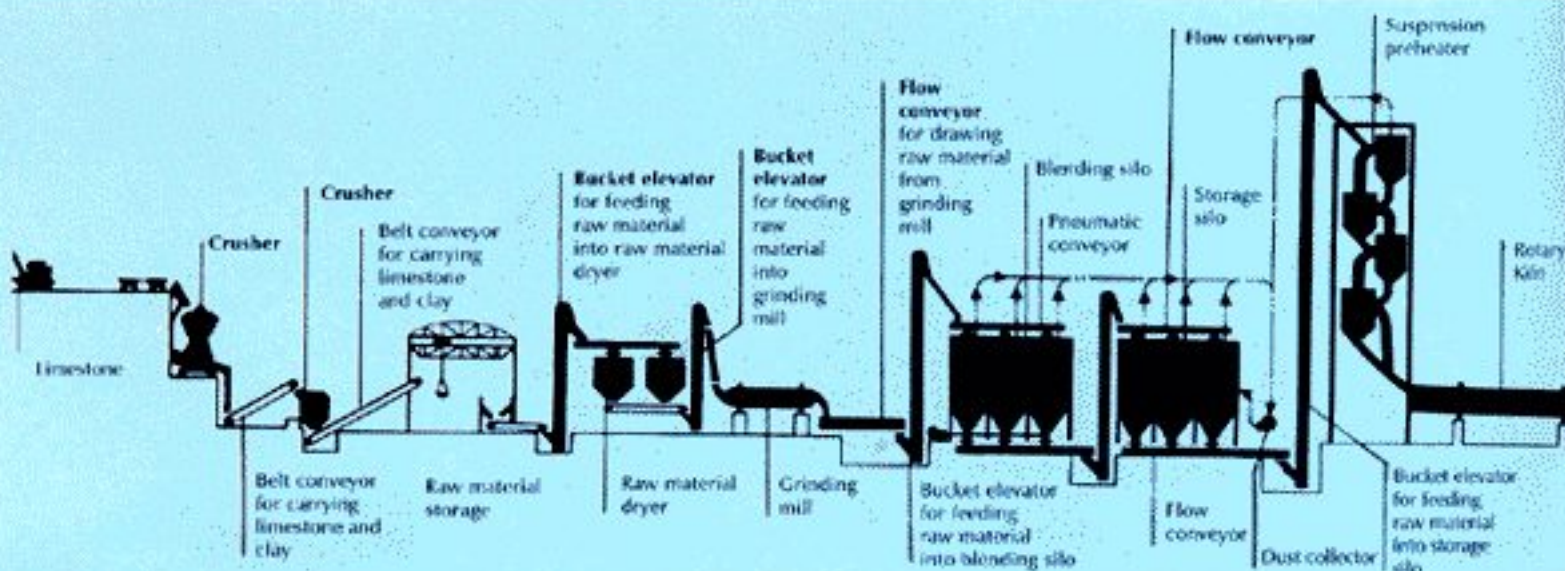


Excel Scraper Reclaimer Chain coupled with high fatigue resistance of links and pins, lower frictional wear of bushes and rollers are in-built quality plus factors that enable it to perform in the most adverse operating conditions.

SCRAPER CHAIN



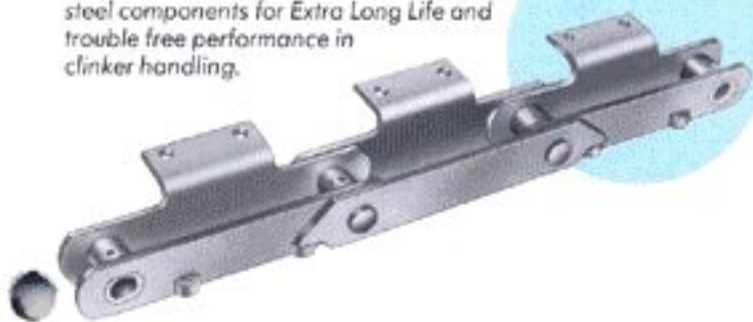
Excel Scraper Chain with welded attachment is widely used for handling of Limestone, Coal and other similar materials. The attachments are designed for easy mounting of scraper bars and to avoid jamming by fine particles.



Plants

DEEP PAN CONVEYOR CHAIN

Excel Deep Pan Conveyor Chain is manufactured from high fatigue strength and wear resistant heat treated steel components for Extra Long Life and trouble free performance in clinker handling.



DEEP BUCKET CONVEYOR CHAIN

Excel Deep Bucket Conveyor Chain is used in cases where conveying is required over long distances and is widely used in place of conventional conveyor chain. The outboard roller incorporates ball bearings which considerably reduce frictional wear and contribute to decrease in chain tension, lower power consumption, lesser noise and ensure Extra Long Life.



BUCKET ELEVATOR CHAIN



Excel Bucket Elevator Chain is ruggedly designed for Extra Long Life under Gritty or Abrasive conditions.

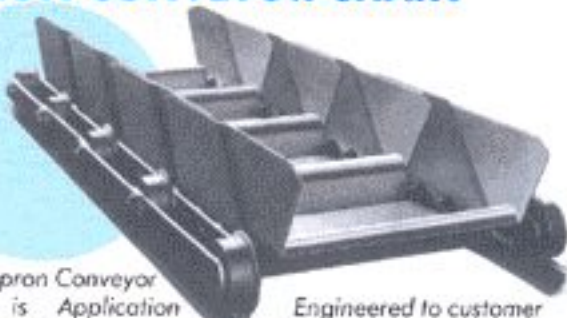
Controlled heat treatment of the components increases tensile strength, improves resistance to Abrasion and Fatigue wear within a broad range of temperature variance, resulting in Extra Long Life.

Excel Bucket Elevator Chain is used for centrifugal bucket elevator. The standard type (XLBE 2856, 2857, 2859 and 2864) meet and exceed the average tensile strength.

Excel Bucket Elevator Chain is ideal for conveyor and elevator hauling of Ash, Crushed Coal, Soda Ash, Cement and Crushed Stone.

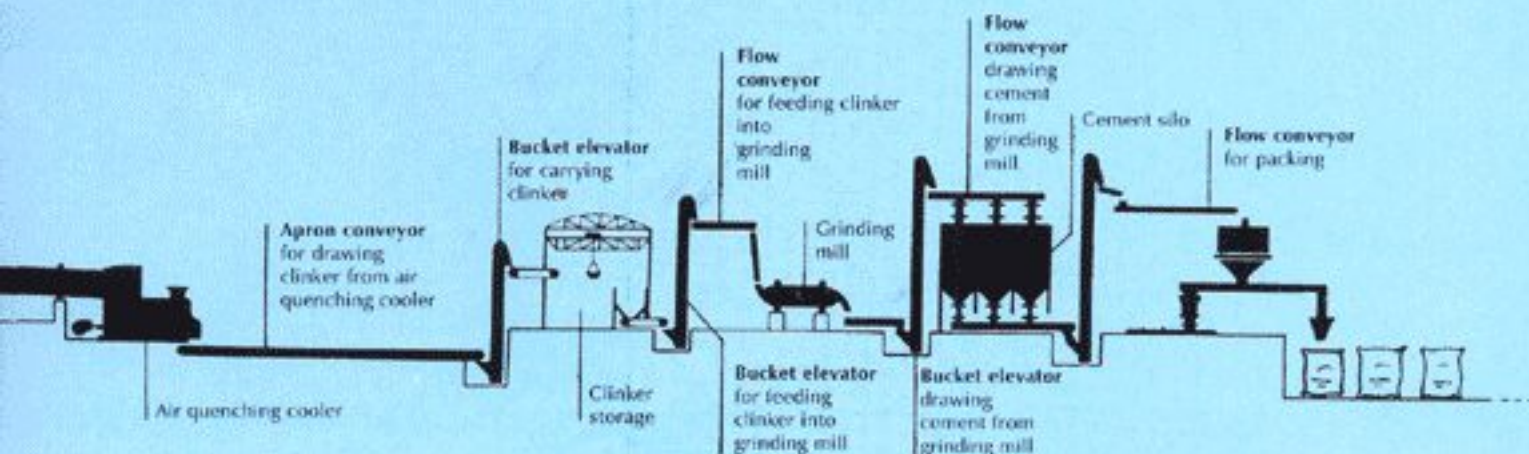
Excel Bucket Elevator Chain is available with various types of bucket attachments namely K-24, K-3, K-35, K-44 and K-443.

APRON CONVEYOR CHAIN



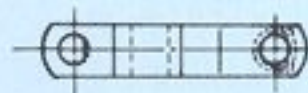
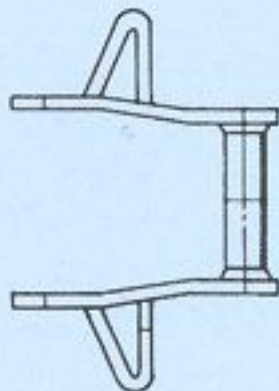
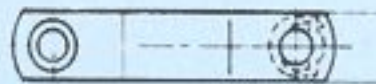
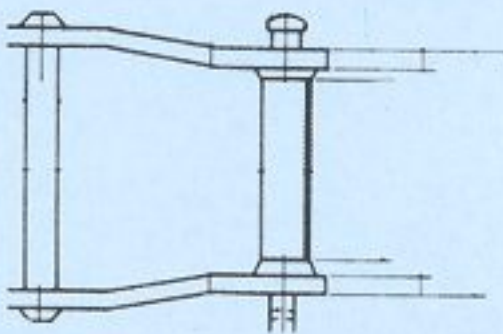
Excel Apron Conveyor Chain is Application Engineered to customer parameters to meet on site applications, this chain consists of a roller with ball bearings for lower frictional wear and ensures a smooth operation for Extra Long Life.

Excel Apron Conveyor Chain is ideal for handling bulk material of different characteristics.

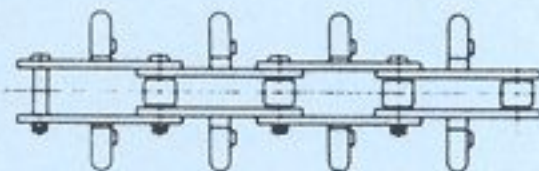


FLOW CONVEYOR CHAIN

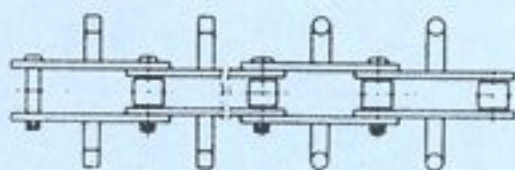
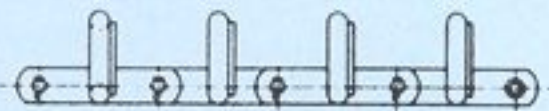
Excel Flow Conveyor Chain is widely used to convey Bulk Material and has High Abrasive Resistance. This chain is ideal for prevention of Pollution because it conveys powder/dust and granules in sealed case construction.



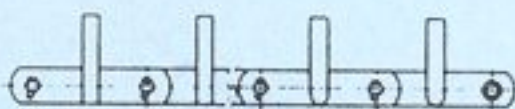
WING



U₂V Attachment

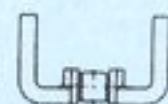


B Attachment

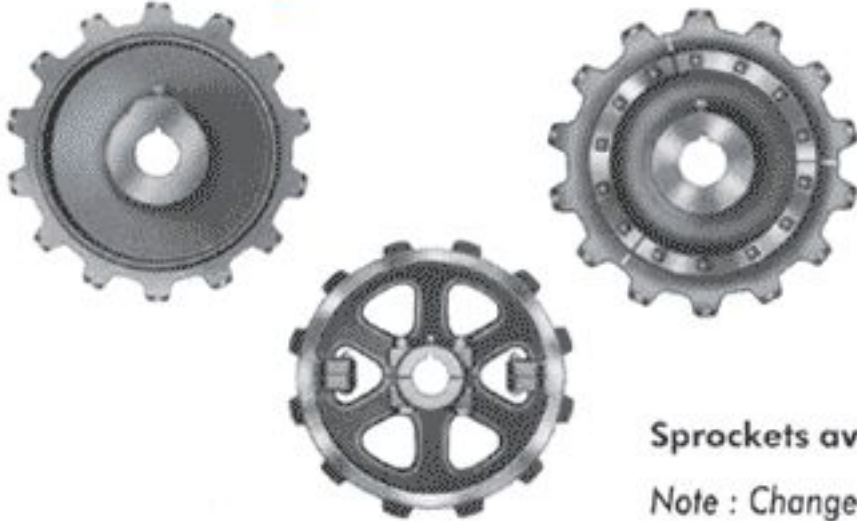


Angle bar attachment

Round bar attachment



Excel Sprockets for Extra Long Chain Life



- 1) High Grade Steel.
- 2) Accurate Tooth Form.
- 3) Precise Pitch Circle Diameter.
- 4) Flame Hardened Teeth (Optional) which ensure longer life due to high wear resistance, can be provided.

Sprockets available upto 3000 mm Diameter.

Note : Change your sprockets when you change your chain.



STANDARD MATERIALS AGENCIES PRIVATE LIMITED

MANUFACTURERS • ENGINEERS

CORPORATE OFFICE :

45/46, Podar Chambers
S. A. Brelvi Road, Mumbai - 400 023, INDIA.
Grams : 'STANSIZE'

Tel : 2266 3262 / 2266 3202 / 2266 5309

Fax : 91 - 22 - 2266 1545

E-Mail : smaexcel@bom2.vsnl.net.in, enquiry@smaexcel.com

www.smaexcel.com